

For more information



Email: waterford@locallink.ie
Tel: **058 22076**
Website: www.locallinkwaterford.ie
@waterfordLink
@locallinkwaterford



Operated by:
TFI Local Link Waterford
The Courthouse
Dungarvan
Co. Waterford
X35 NW65



Ask your driver or other
staff member for assistance



Our vehicles are wheelchair accessible



TFI Local Link fares include single, return, student
and child fares. Cash is accepted and Free Travel
Pass holders and children under 5 years travel for
free.

For more information on fares, please visit:
transportforireland.ie/fares/bus-fares or call
TFI Local Link Waterford.



You can use the TFI Go app or the TFI Leap Card
to pay for your ticket. For further details, visit:
transportforireland.ie



TFI Go
app



TFI Leap
Top-Up app

Full information on all available journeys and
connections are on the National Journey Planner at:
www.transportforireland.ie

Service does not operate on Christmas Day.

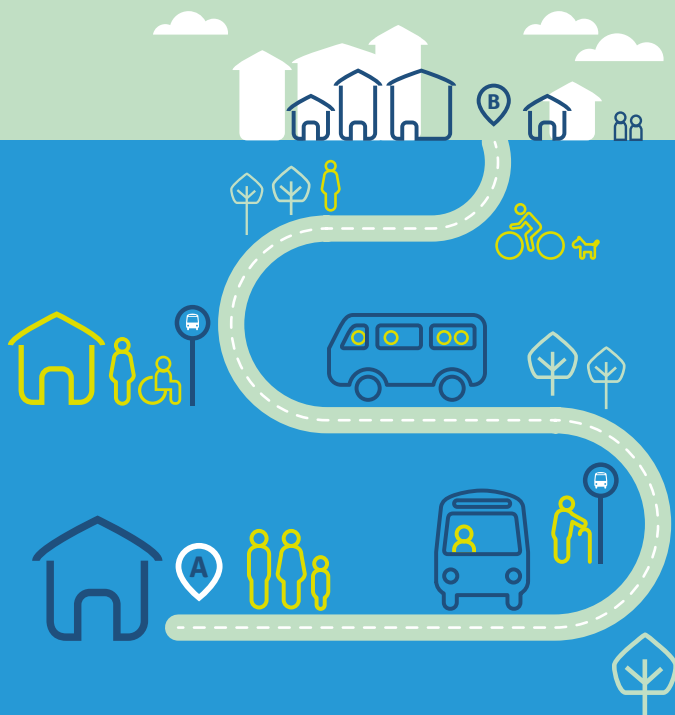
Information correct at the time of print: **February 2024**



Route

356

Ballinroad to Clonmel



local link
Waterford



Timetable

356

Ballinroad to Clonmel

Days: Monday - Sunday & Public Holidays

BALLINROAD TO CLONMEL

Departs	Stops	Monday - Sunday & Public Holidays				
Ballinroad	<i>Lord Maguire's Pub</i>	07:20	10:55	14:15	17:15	20:15
Dungarvan	<i>Davitt's Quay</i>	07:30	11:05	14:25	17:25	20:25
Touraneena	<i>Church</i>	07:50	11:25	14:45	17:45	20:45
Ballymacarbry	<i>Community Centre</i>	08:00	11:35	14:55	17:55	20:55
Clonmel	<i>Oldbridge</i>	08:20	11:55	15:15	18:15	21:15
Clonmel	<i>Showgrounds</i>	08:23	11:58	15:18	18:18	21:18
Clonmel	<i>Slievenamon Road</i>	08:24	11:59	15:19	18:19	21:19
Clonmel	<i>Train Station</i>	08:28	12:03	15:23	18:23	21:23
Clonmel	<i>Queen Street</i>	08:31	12:06	15:26	18:26	21:26
Clonmel	<i>Hospital</i>	08:33	12:08	15:28	18:28	21:28
Clonmel	<i>Marlfield Road</i>	08:37	12:12	15:32	18:32	21:32
Clonmel	<i>Marlfield</i>	08:39	12:14	15:34	18:34	21:34

CLONMEL TO BALLINROAD

Departs	Stops	Monday - Sunday & Public Holidays				
Clonmel	<i>Marlfield</i>	08:50	12:45	15:45	18:45	22:20
Clonmel	<i>Marlfield Road</i>	08:52	12:47	15:47	18:47	22:22
Clonmel	<i>Hospital</i>	08:56	12:51	15:51	18:51	22:26
Clonmel	<i>Queen Street</i>	08:58	12:53	15:53	18:53	22:28
Clonmel	<i>Train Station</i>	09:02	12:57	15:57	18:57	22:32
Clonmel	<i>Slievenamon Road</i>	09:04	12:59	15:59	18:59	22:34
Clonmel	<i>Showgrounds</i>	09:06	13:01	16:01	19:01	22:36
Clonmel	<i>Oldbridge</i>	09:09	13:04	16:04	19:04	22:39
Ballymacarbry	<i>Community Centre</i>	09:29	13:24	16:24	19:24	22:59
Touraneena	<i>Church</i>	09:39	13:34	16:34	19:34	23:09
Dungarvan	<i>Davitt's Quay</i>	09:59	13:54	16:54	19:54	23:29
Ballinroad	<i>Lord Maguire's Pub</i>	10:09	14:04	17:04	20:04	23:39